



Capability Statement

The background is a vibrant blue underwater scene filled with numerous bubbles of various sizes. A large, semi-transparent blue spiral graphic is overlaid on the right side of the image, starting from the center and expanding outwards. The text is positioned on the left side of the image.

Aotearoa's leading Commercial and Scientific Dive Specialists.

Going beyond the surface,
making the invisible visible

Index.

Introduction.
About Us.
Purpose & Capabilities.
Our Services.
Our Equipment.
Cultural Framework.
Clients & Partners.
Referees.
Contact.

Introduction.

“Deep Dive Division is focused on delivering quality commercial and scientific dive solutions for our clients and the environments they are kaitiaki of. The strength of our expertise, experience, engagement and key partnerships, provide us with the tools to positively disrupt an industry that needs to stay ahead of the game in order to create environmental resilience.”

– Tua Karalus **FOUNDER AND MANAGING DIRECTOR**

About Us.

Our Story

Deep Dive Division is a commercial and scientific dive company, based in Waikato.

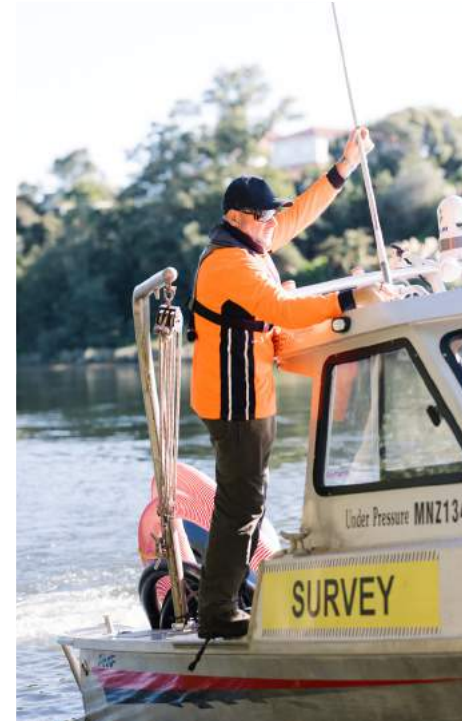
Founded in 2018 by Tua and Courtney Karalus, Deep Dive Division is the only Maori and Pacific commercial and scientific dive company in Aotearoa.

The Te Ao Maori and Pacific view, and the Mātauranga Maori approach to our work, provides our clients the opportunity to experience truly sustainable outcomes while maintaining the cultural integrity of our environment.

The core value of Deep Dive Division is to create a symbiotic relationship between people and the natural environment, and through this journey we can restore, preserve and be kaitiaki through action, leadership, and collaboration.

The company's founder, Tua Karalus, has 20 years commercial dive experience and has a Bachelor of Environmental Science degree. The integration of these two disciplines is powerful in the industry and provides a platform for clients and partners to have solutions that are qualified and holistic.

“Environmental impact is becoming more significant and we provide the framework for ensuring water management, regeneration and preservation is at its optimum.”



Create strong partnerships and collaborations that enhance the resilience and mauri in freshwater and marine environments in Aotearoa.

Delivering the Mission

Our purpose is to go beyond the surface and partner with our clients to provide them the most comprehensive approach to asset management, environmental assessments, biosecurity and infrastructure inspections.

Our team has over 100 years of experience in this industry and their skills are curated to ensure our deliverables are the best in the business.

Deep Dive Division is commercial, scientific and technology focused to ensure our clients have the advantage of accurate information so that reporting, data collection and management plans can be done with confidence and within the guidelines of the United Nations Sustainability Development Goals. Our capabilities as a business and experience in our industry means that clients are backed with a team that are compliant, capable and have the capacity.



Commercial Dive services include:

1. Infrastructure Inspections and Repairs
2. Reservoir cleaning and Inspections
3. Salvage
4. Drilling of mooring systems
5. Health and Safety Diving for Film and TV production
6. Non-Destructive Testing
7. Hazardous Material Diving
8. Underwater Construction and Environmental Audits
9. Remotely Operate Vehicle (Boxfish ROV) for confined spaces, 3D imaging and Photogrammetry
10. Underwater Asset Management Plans
11. Underwater welding and ultra-thermic cutting

Environmental Dive services include:

1. Environmental assessments and planning
2. Biosecurity
3. EDNA testing
4. Aquaculture
5. Seaweed cultivation
6. Water Quality Management
7. ROV services for data collection and video analysis



Our Equipment

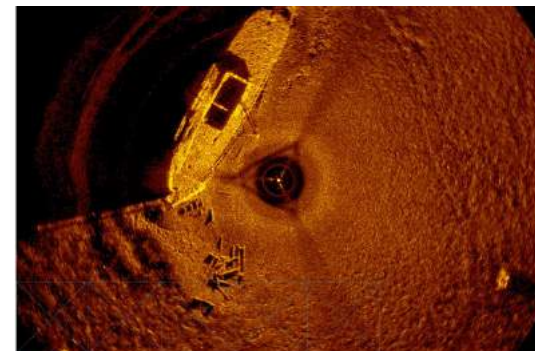
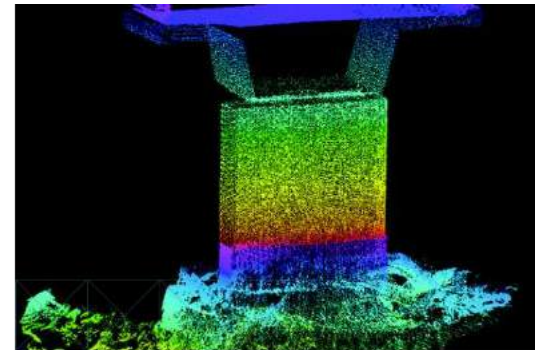
- 7.2 metre AMF Vessel
- 6m flat bottom punt
- 6m x 2.5m dumb barge
- UltraThermic cutting equipment (BROCO)
- Hydraulic Power Pack and assortment of hydraulic tools
- 4 Inch Hydraulic Trash Pump
- 4 Inch Fire Pump
- 400 Amp Generator and Welder
- 2 x SSBA Dive Spreads
- CCTV Camera Set Up
- Contaminated Dive Spread
- Potable Water Dive Spread
- Boxfish ROV and accessories
- Dive Command Trailer
- Decompression Chamber (arriving Q1 23)
- 3D modelling and terrain mapping. Examples (using UAV, USV or ROV):
 - 3D mapping
 - Air or water quality sampling
 - and other quantitative data collection
- Shark Technologies navigator and Multi Beam Sonar, (learn more on page 16)

Shark Technologies navigator and Multi Beam Sonar

This Navigator is a diver held sonar imaging and navigation system with advanced sensors that allow the navigator to become a force multiplier, enabling smaller groups to cover more ground in less time – which makes us more efficient and allows us to find objects easily.

Benefits:

- provide key co-ordinates for search and rescue operations,
- digitally map seafloors and riverbeds
- digitally map bridges and structures underwater
- measure and provide accurate data in zero visibility situations





Cultural Framework

Deep Dive Division is a Maori and Pasifika business with foundations built on regenerative practices with sustainable and restorative outcomes.

The context in which we operate incorporates Mātauranga Maori and the connection and responsibility we have, to be guardians of the land and water. Kaitiakitanga and Kaawanatanga are the totems of Deep Dive Division and our operations integrate Te Tiriti o Waitangi where we convert concept to action through our work towards becoming true kaitiaki and leading the way forward.

Registered with Amotai - As a 100% Pasifika and Maori owned, our goal is to pioneer supplier diversity within our Industry and create greater opportunities for NZ businesses to prosper.

Regenerative – environmental strategies.

Inclusive – encompass Maori and Pacific practices and pathway generation.

Resilience – building and adapting to create climate resilience.

Innovative solutions – committed to the development of new ideas and thinking creatively for.




Clients & Partners



Referees.

Mike Clayton

BRIAN PERRY CIVIL

 021 333 715

 michael.cl@fcc.co.nz

Chris Battershill


UNIVERSITY OF WAIKATO

 027 445 5908

 christopher.battershill@waikato.ac.nz

Aaron Hynds

HYNDS PIPES

 021 569 100

 aaron.hynds@hynds.co.nz

Nidhita Gosai

WATERCARE

 021 225 4517

 nidhita.gosai@water.co.nz



CABLE

MNZ134185

Under Pressure

Follow Us

To build a community of kaitiaki we share content about what we encounter at Deep Dive Division on our social platforms.

Connecting with people matters to us and we welcome engagement from our followers.



deepdivedivision.co.nz



[deepdivedivision](https://www.youtube.com/deepdivedivision)



[deepdivedivisionnz](https://www.instagram.com/deepdivedivisionnz)



[Deep Dive Division](https://www.linkedin.com/company/deep-dive-division)


Contact.



To grab a coffee and have a chat to learn more about how Deep Dive Division can add value and bring innovation and accuracy to your business please feel free to reach out.

Tua Karalus

FOUNDER AND MANAGING DIRECTOR

 021 115 6809

 tua@deepdivedivision.com

Courtney Karalus

COMMERCIAL DIRECTOR

 021 040 4171

 courtney@deepdivedivision.com

Meet the Team.

YOUR
WAI
IS OUR
WHY



deep
dive
DIVISION

Follow the journey @deepdivedivisionnz | deepdivedivision.co.nz

