



Capability Statement

The background is a deep blue underwater scene filled with numerous bubbles of various sizes. Overlaid on the right side is a large, stylized Maori hui symbol (a spiral) in a darker blue shade. The text is positioned on the left side of the image.

Aotearoa's leading Commercial and Scientific Dive Specialists.

Going beyond the surface,
making the invisible visible

“Deep Dive Division is focused on delivering quality commercial and scientific dive solutions for our clients and the environments they are kaitiaki of. The strength of our expertise, experience, engagement and key partnerships, provide us with the tools to positively disrupt an industry that needs to stay ahead of the game in order to create environmental resilience.”

– Tua Karalus **FOUNDER AND MANAGING DIRECTOR**





To learn more about how Deep Dive Division can deliver solutions, data and innovation to your projects - please feel free to reach out.

Tua Karalus

FOUNDER AND MANAGING DIRECTOR



021 115 6809



tua@deepdivedivision.com

Courtney Karalus

COMMERCIAL DIRECTOR



021 040 4171



courtney@deepdivedivision.com

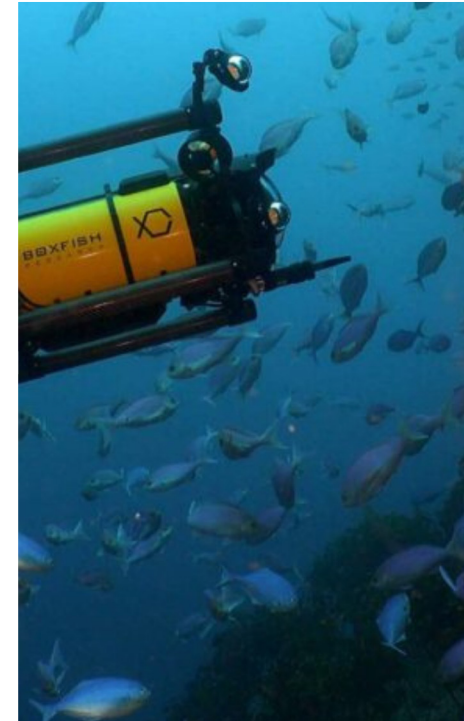
Our Story

Deep Dive Division is a commercial and scientific diving company based in Waikato, Aotearoa, with the capability to mobilize and deliver services nationwide. Established in 2018 by Tua (Samoa) and Courtney Karalus (Ngati Haua), we are proud to be the only Māori and Pacific-owned business of our kind in the country.

Guided by Te Ao Māori, Pacific perspectives, and Mātauranga Māori principles, we deliver sustainable, culturally grounded solutions that honour the integrity of our environment.

At the heart of our mission is the creation of a symbiotic relationship between people and the natural world, underpinned by innovation, data, and technology. Through these tools, we empower our clients and partners with visibility and insights, enabling informed decision-making and sustainable practices.

With over 25 years of commercial diving experience, a Bachelor of Environmental Science and experience in environmental engineering, Tua bridges the gap between technical expertise, kaitiakitanga and water technology.



Create strong partnerships and collaborations that enhance the resilience and mauri in freshwater and marine environments in Aotearoa.

Delivering Our Mission

Our mission is to create a balance between people and nature through innovation, data, and technology. By providing clear insights and practical solutions, we empower clients to make informed decisions for long-term environmental and infrastructure sustainability.

We equip our clients with accurate data and insights to support positive outcomes, confident reporting, informed decision-making, and effective management plans. Our capabilities and industry expertise ensure that clients have the right diagnostic, data and delivery to get the outcome they desire. We are with you every step of the way.

CORE VALUES



Mana

Mana is a supernatural force in a person, place or object and denotes empowerment in all interactions.



Excellence

Excellence is striving for progress each day, embracing innovation, and holding oneself accountable to the principles of respect, responsibility, and ensuring that actions align honour & with raising standards.



Kaitiaki

Kaitiaki is the principle of guardianship, the duty to protect, preserve, and sustain resources for future generations.



Integrity

Integrity is involves upholding strong ethical principles, honest code of conduct. The commitment to doing what is right, even when no one is watching.



Brotherhood

Brotherhood is a deep bond of solidarity, trust, and mutual support built on shared values or goals. The spirit of teamwork and friendship, where individuals collaborate with respect and a shared commitment to success.



Opportunity

Opportunity emphasizes creating and embracing chances for growth, development, and success. This is an environment where potential is recognised, and resources are provided to help people reach their fullest potential.



Innovation

Innovation encourages creativity, new ideas, and continuous improvement to drive progress. It fosters a mindset of adaptability and forward-thinking which enables us to stay competitive and solve challenges effectively. All ideas welcome any time.



deep
dive
DIVISION



We go
anywhere

DEEPDIVEDIVISION.CO.NZ

Commercial Dive services include:

1. Infrastructure installation, repairs and maintenance
2. Reservoir cleaning and inspections
3. Salvage
4. Drilling of mooring systems
5. Health and safety diving for film and TV production
6. Non-destructive testing
7. Hazardous material diving
8. Underwater construction and environmental audits
9. Remotely operate vehicle (boxfish ROV) for confined spaces, 3d imaging and photogrammetry
10. Underwater asset management plans
11. Underwater welding and ultra-thermic cutting
12. Marine hull inspections and cleans

Environmental Dive services include:

1. Environmental assessments and planning
2. Biosecurity
3. EDNA testing
4. Aquaculture
5. Seaweed cultivation
6. Water quality management
7. ROV services for data collection and video analysis
8. Bathymetric surveys
9. Water accounting
10. AUV
11. Asset life extension
12. Leak detection



Consulting

At Deep Dive Division, we understand that water infrastructure projects demand not only technical expertise but also a comprehensive understanding of the unique challenges associated with freshwater and marine environments.

Tua Karalus, Managing Director of Deep Dive Division, is a distinguished specialist consultant in water infrastructure. His extensive experience and deep knowledge bring unparalleled insight to every project, ensuring that all aspects of water infrastructure are managed with precision and care.

By leveraging our expertise, clients benefit from:

Expertise and Insight:

With Tua Karalus leading our team, we offer profound knowledge of water infrastructure systems and their specific requirements, enabling us to provide tailored solutions that address the unique needs of each project.

Innovative Solutions:

We stay at the forefront of industry developments and best practices, applying cutting-edge methodologies to deliver effective and efficient outcomes.

Comprehensive Risk Management:

Our thorough understanding of safe operating procedures and regulatory standards ensures that risks are managed effectively and compliance is maintained, safeguarding the integrity of your infrastructure.

Holistic Approach:

Our approach integrates all facets of water infrastructure, from planning and design to implementation and maintenance, ensuring cohesive and successful project execution.

Consulting services include:

1. CAD drawing and design
2. Engineering and fabrication
3. Regenerative Infrastructure
4. ROV - measuring, water sampling, inspecting, risk management, 4k video and imagery, robotic arm, multibeam scanner, environmental sensors - turbidity, chlorophyll, flurometer, hydrophone, ph sensor, mini CTD
5. Planning and consulting
6. Consents
7. Barge/Pontoon
8. Crane
9. AI driven workflow and water data collation
10. Digital documentation



Our Equipment

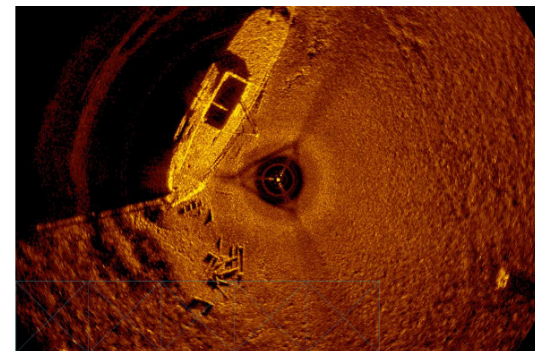
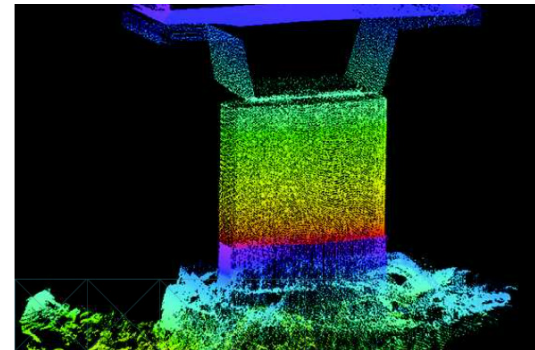
- 7.2 metre AMF Vessel
- 6m flat bottom punt
- 6m x 2.5m dumb barge
- UltraThermic cutting equipment (BROCO)
- Hydraulic Power Pack and assortment of hydraulic tools
- 4 Inch Hydraulic Trash Pump
- 4 Inch Fire Pump
- 400 Amp Generator and Welder
- 2 x SSBA Dive Spreads
- CCTV Camera Set Up
- Contaminated Dive Spread
- Potable Water Dive Spread
- Boxfish ROV and accessories
- Dive Command Trailer
- Decompression Chamber
- 3D modelling and terrain mapping.
Examples (using UAV, USV or ROV):
 - 3D mapping
 - Air or water quality sampling
 - and other quantitative data collection
- Shark Technologies navigator and Multi Beam Sonar

Shark Technologies navigator and Multi Beam Sonar

This Navigator is a diver held sonar imaging and navigation system with advanced sensors that allow the navigator to become a force multiplier, enabling smaller groups to cover more ground in less time – which makes us more efficient and allows us to find objects easily.

Benefits:

- provide key co-ordinates for search and rescue operations,
- digitally map seafloors and riverbeds
- digitally map bridges and structures underwater
- measure and provide accurate data in zero visibility situations







Pera Product Range

PERA



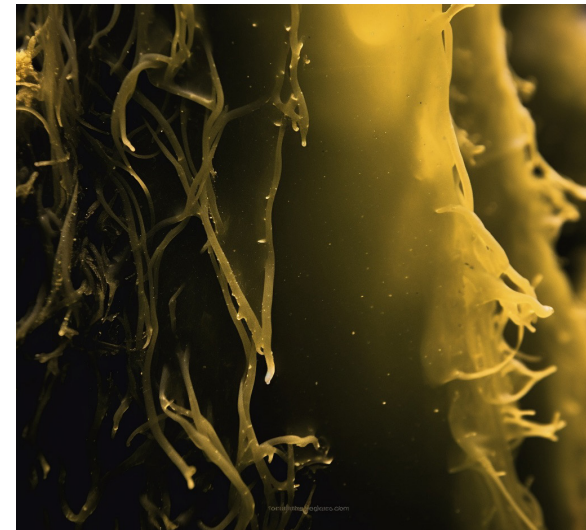
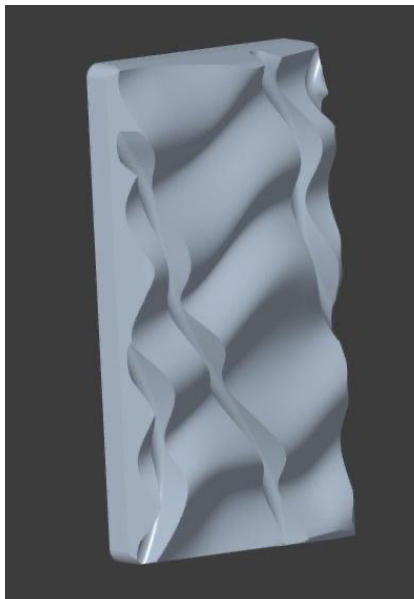
PEARA

Deep Dive Division offers regenerative infrastructure - or as we like to call it "Social Housing Underwater". Our innovative product range, PEARA, addresses water degradation in freshwater and marine environments through advanced, sensor-equipped reef systems designed to restore biodiversity, support carbon capture, and generate actionable environmental data. Together, we deliver sustainable, science-backed solutions to regenerate aquatic ecosystems.



Peara Kelp Wall

Designed as a climate change mitigation structure which enhances bioersity and can be used as an infrastructure alternative.



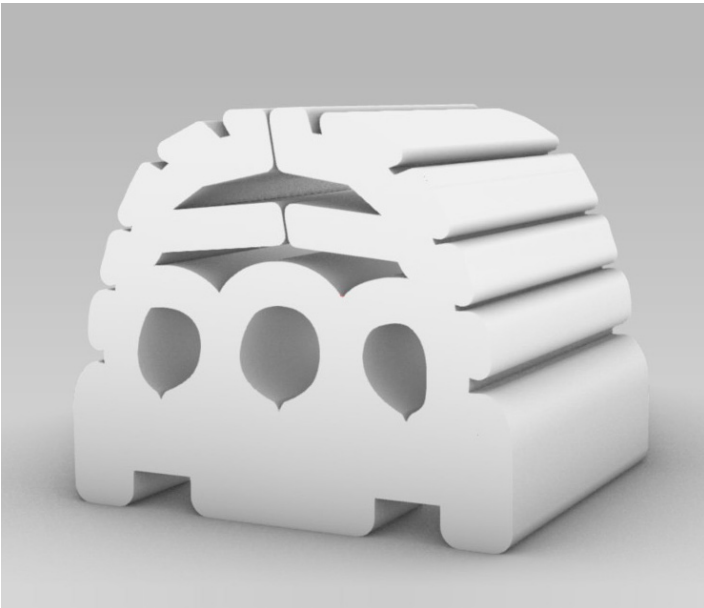
Specifications:

Width	2000mm
Height	4000mm
Depth	300mm

*All structures exclusively manufactured at Hynds Concrete. *All structures exclusively installed and monitored by Deep Dive Division Ltd.

Peara Crayfish/Lobster Hub

Designed to provide refuge and habitat for lobsters from the puerulus lifecycle stage through to the adult rock lobster.



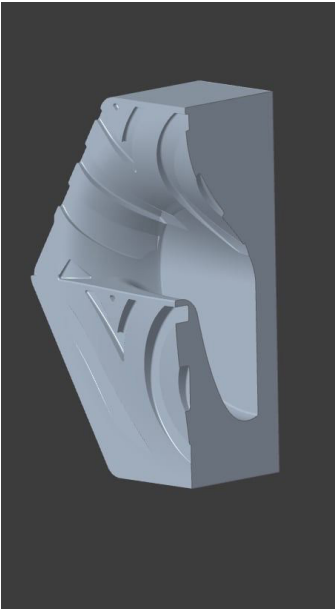
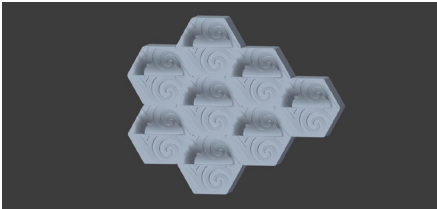
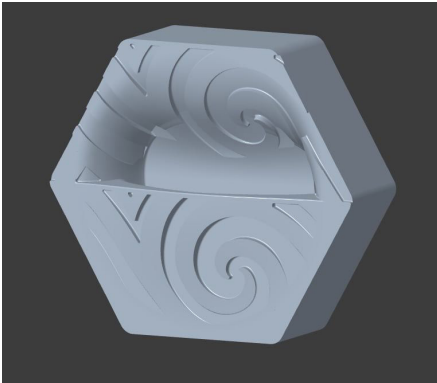
Specifications:

Width	1000mm
Height	800mm
Depth	800mm

*All structures exclusively manufactured at Hynds Concrete. *All structures exclusively installed and monitored by Deep Dive Division Ltd.

Peara Moana Wall Tile

Designed to create life and strength between land and water. Infrastructure that regenerates biodiversity and cleans water.



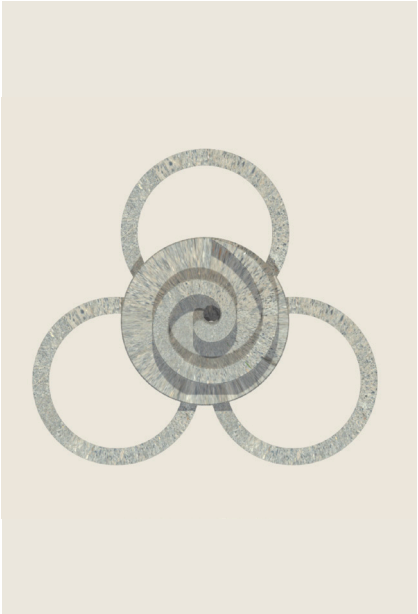
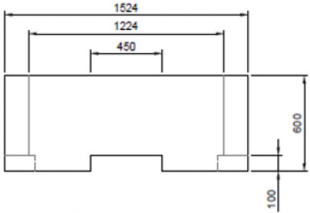
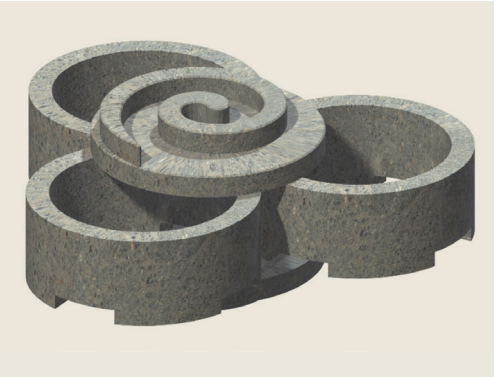
Specifications:

Width	400mm
Height	450mm
Depth	150mm
Water Capacity	2 Litres
Fixings	S4 Stainless Threaded Rods and Epoxy
Composition	50MPA Low Carbon Marine Hydura Concrete
Weight	30kg

*All structures exclusively manufactured at Hynds Concrete. *All structures exclusively installed and monitored by Deep Dive Division Ltd.

Peara Reef System

Designed to act as regenerative reef systems, has the ability to be interlocked and stacked and scalable from 1.5m to many kilometres.



Specifications:

Lid	300mm thick with Koru raised on top for additional surface area. Feet to span between riser units, act as shear key and assist in locking units together on the sea floor.
Riser	Ø1502mm OD Ø1350 ID 600mm Height 500mm effective height with feet cutouts

*All structures exclusively manufactured at Hynds Concrete. *All structures exclusively installed and monitored by Deep Dive Division Ltd.

CLIENTS & PARTNERS



Mike Clayton

BRIAN PERRY CIVIL

 021 333 715

 michael.cl@fcc.co.nz

Chris Battershill

UNIVERSITY OF WAIKATO

 027 445 5908

 christopher.battershill@waikato.ac.nz

Aaron Hynds

HYNDS PIPES

 021 569 100

 aaron.hynds@hynds.co.nz

Nidhita Gosai

GENESIS ENERGY

 027 331 6317

 nidhita.gosai@genesisenergy.co.nz



Follow Us

To build a community of kaitiaki we share content about what we encounter at Deep Dive Division on our social platforms.

Connecting with people matters to us and we welcome engagement from our followers.



deepdivedivision.co.nz



[deepdivedivision](https://www.youtube.com/deepdivedivision)



[deepdivedivisionnz](https://www.instagram.com/deepdivedivisionnz)



[Deep Dive Division](https://www.linkedin.com/company/deep-dive-division)

